

Knowle DGE Post 16 School

Aecom meeting. 14.02.2020
(Updated following meeting)



**ALLFORD
HALL
MONAGHAN
MORRIS**

Redline Boundary

Where we were



Redline Boundary

Changes to boundary



Redline Boundary

Where we are

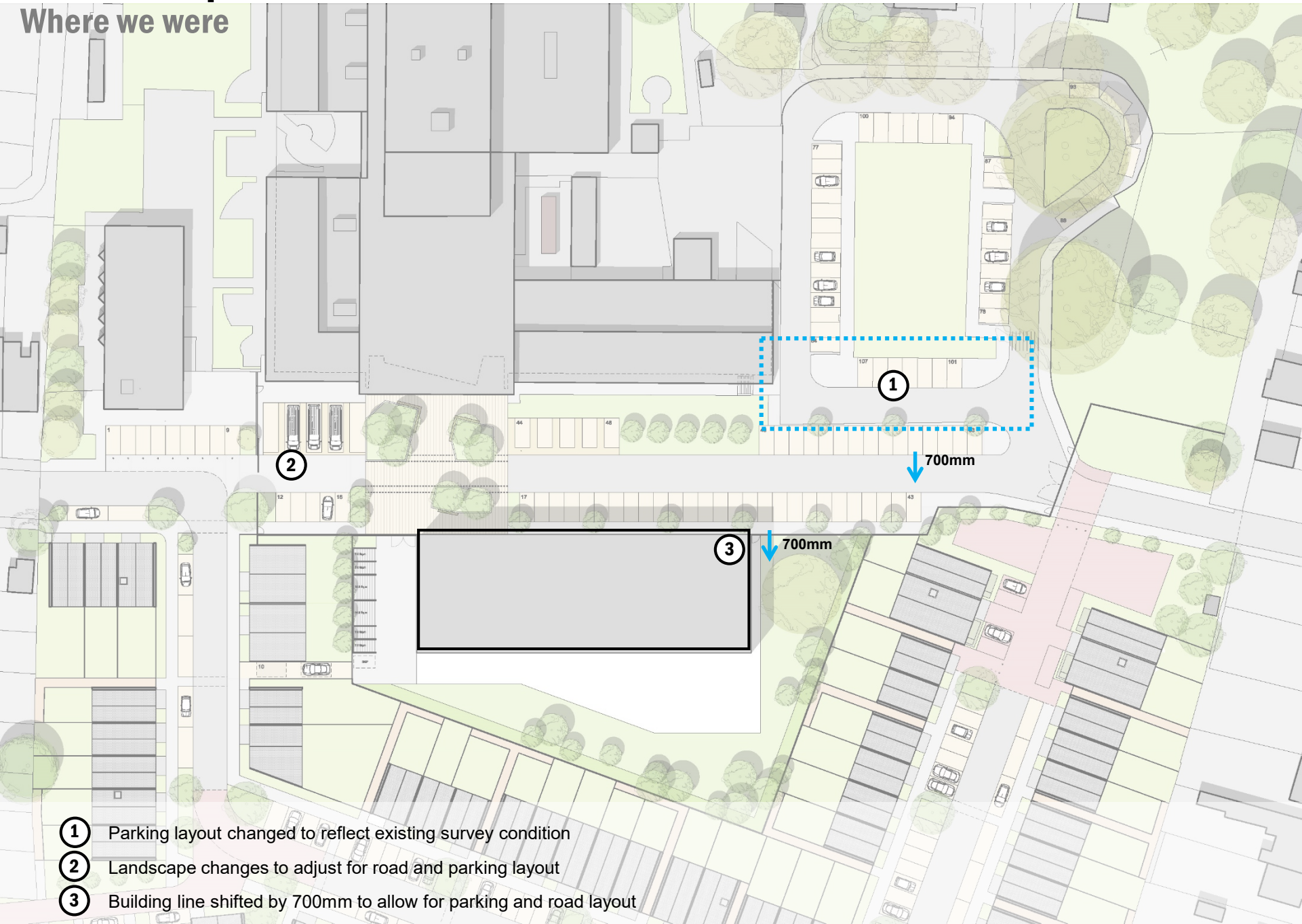


Site Plan Updates / Secure line / Vehicle tracking



Site Plan Updates

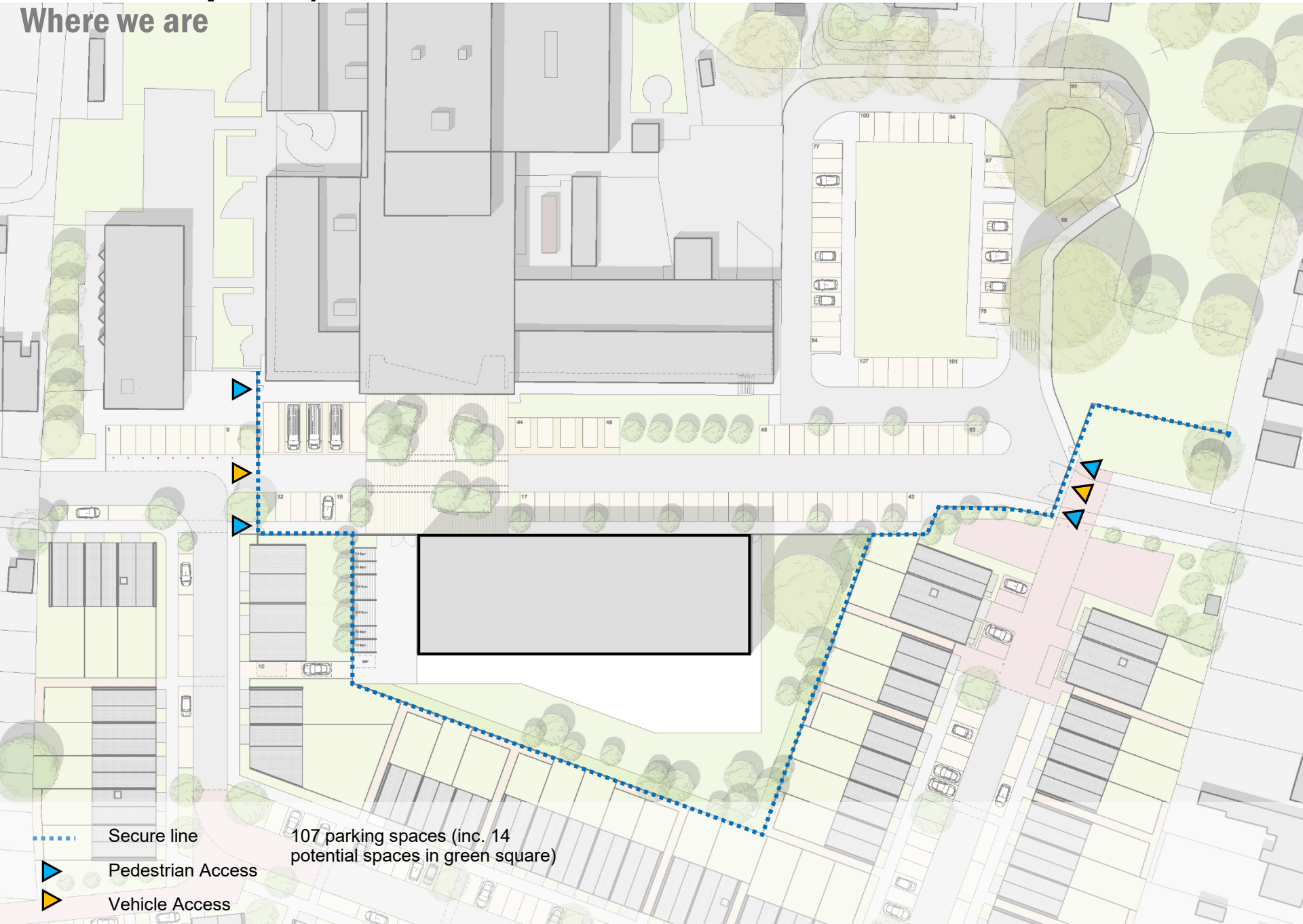
Where we were



- ① Parking layout changed to reflect existing survey condition
- ② Landscape changes to adjust for road and parking layout
- ③ Building line shifted by 700mm to allow for parking and road layout

Site Plan Update / Secure line

Where we are

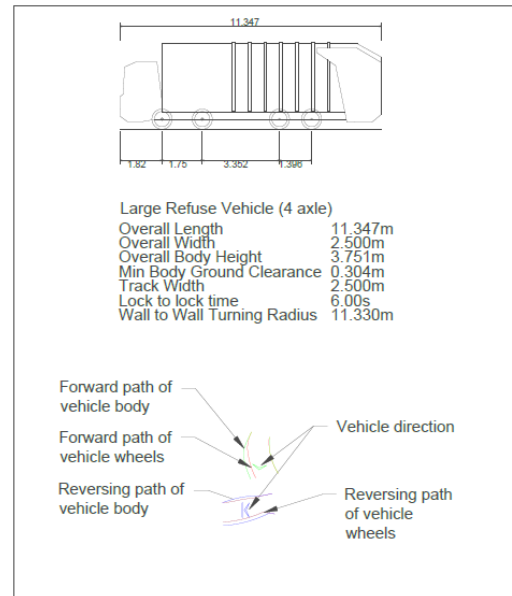


- Secure line
- Pedestrian Access
- Vehicle Access

107 parking spaces (inc. 14 potential spaces in green square)

Vehicle tracking

Where we are



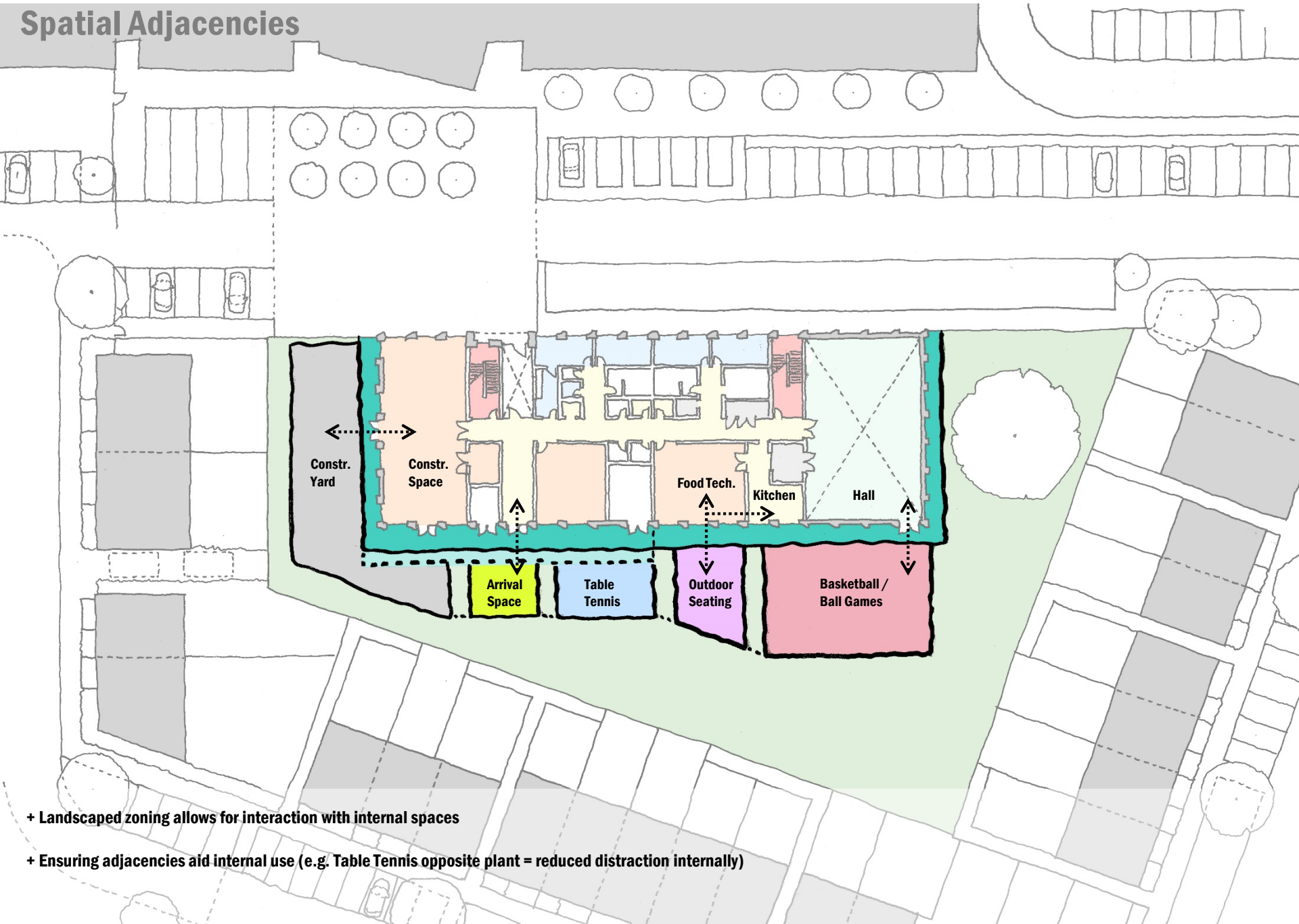
- + Parking layout for 5 minibuses is feasible within the current landscape layout
- + Existing road layout is maintained for the Nursery parking area

External spaces & school brief



GF Plan

Spatial Adjacencies



+ Landscaped zoning allows for interaction with internal spaces

+ Ensuring adjacencies aid internal use (e.g. Table Tennis opposite plant = reduced distraction internally)

CFA progress

Landscape Design

Landscape Proposals

Character and Perception

The diagram to the right illustrates how we would define areas by character and use to create a series of connected external spaces.

- ① Arrival/connecting space
- ② Avenue
- ③ Learning
- ④ Threshold
- ⑤ Calm / Quiet Space
- ⑥ Social
- ⑦ Active
- ⑧ Green Veil Buffer (restricted student access)



CFA progress

Landscape Design

Landscape Proposals

Landscape Sketch Plan

Option 1

Retains established trees outside of the existing school and TPO tree within the school grounds.

The proposals create a tree lined avenue with integrated parking.

The arrival space connects the two buildings, raised planters break the linear form and narrow the streetscape, helping to connect the north and south and calm traffic through the site.

The boundary is planted with small trees within a spiky hedge.

The sloping ground planted with a low ground cover.

The scheme accommodates all 48 no. of the trees required under the BTRS within the redline.

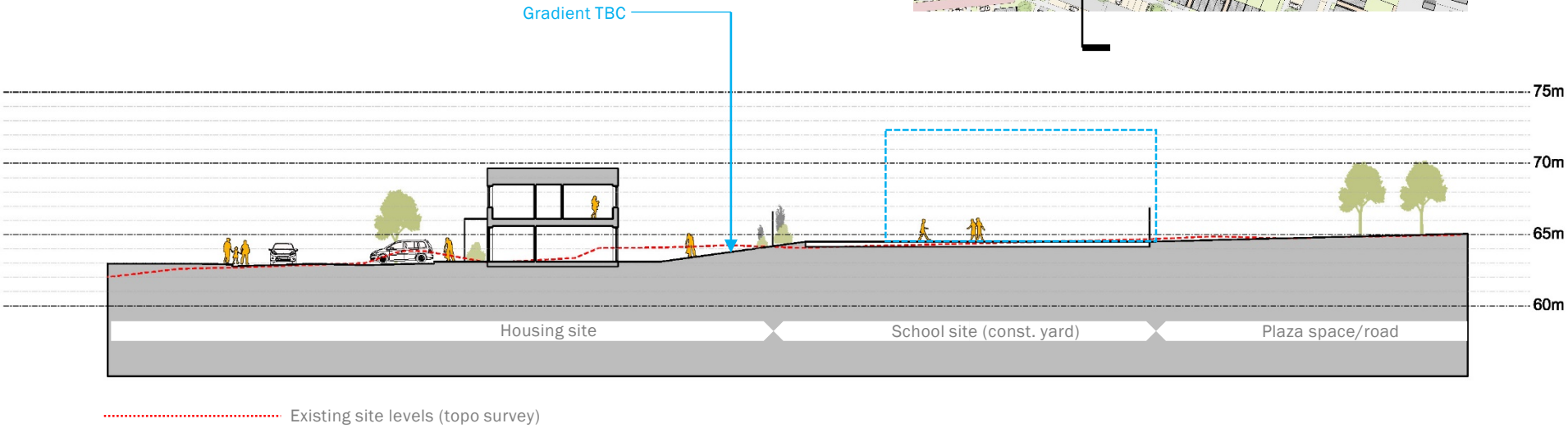


Site levels and sections



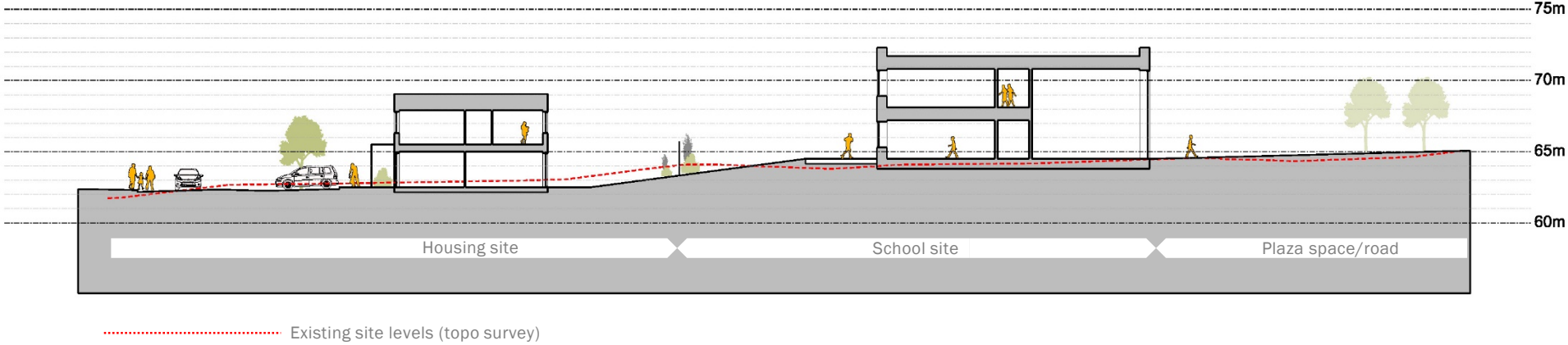
Site sections

Section 1



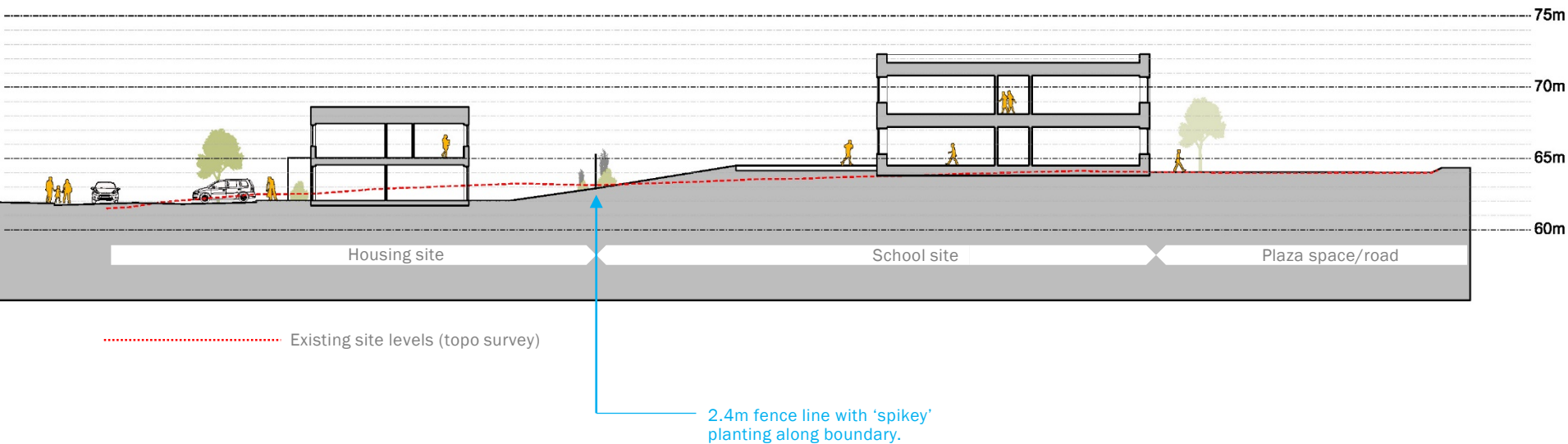
Site sections

Section 2



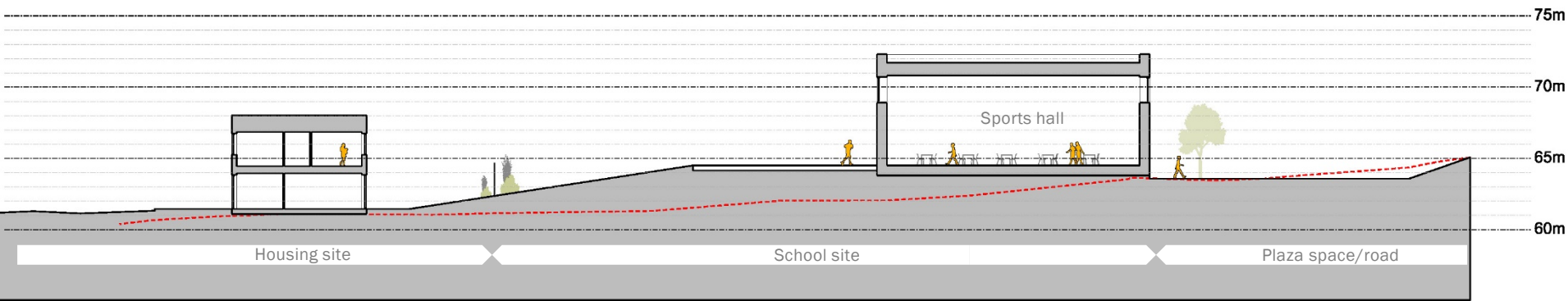
Site sections

Section 3



Site sections

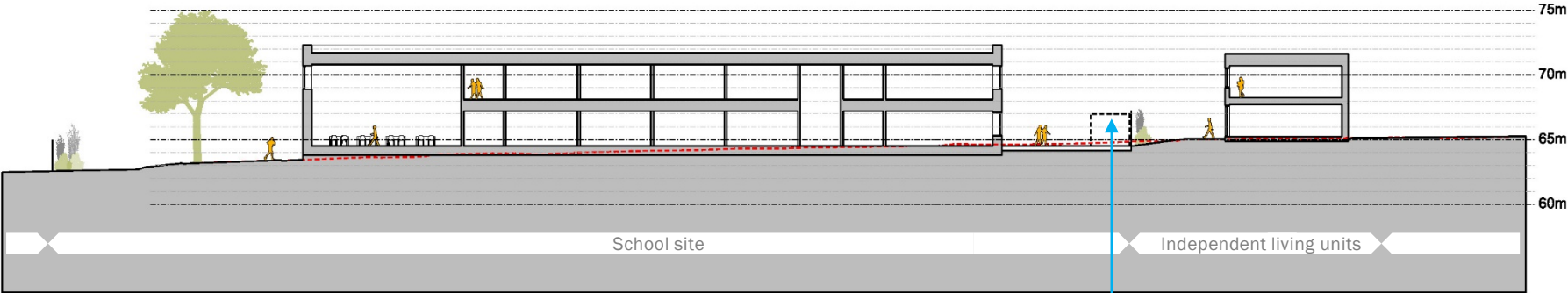
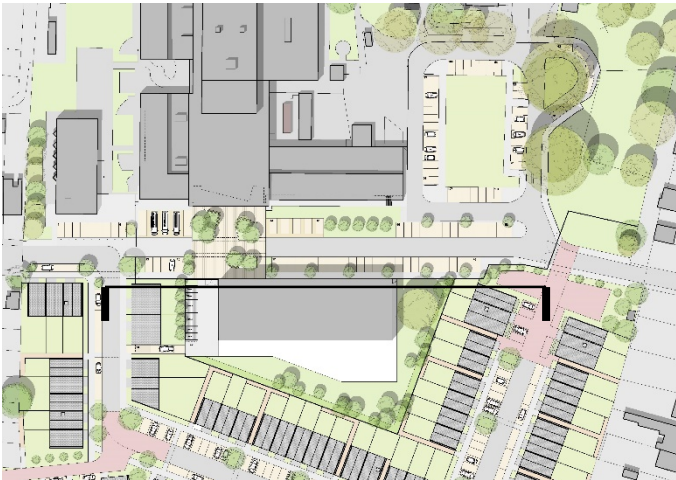
Section 4



..... Existing site levels (topo survey)

Site sections

Section 5



..... Existing site levels (topo survey)

Indicative outdoor construction bays

END